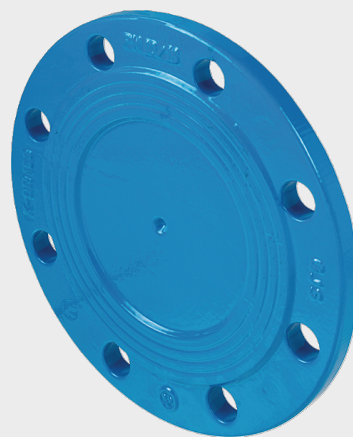
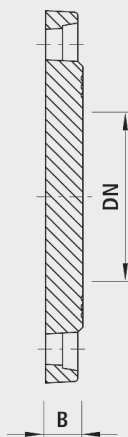


Bride borgne, PN 16**8000****Exécution**

- Autres niveaux de pression sur demande

Caractéristiques





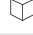
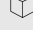
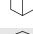
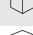
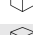







- Montage simple et rapide
- Étanchéité sûre
- Toujours démontable
- Cotes de raccordement pour brides
 - selon DIN EN 1092-2
 - DN 25 à DN 150: PN 10 / 16
 - DN 200 à DN 600: PN 10 ou 16, indiquer à la commande
- Température de service
 - max. 40 °C

Matière

- EN-GJS-400 (GGG 40)
- Fonte sphéroïdale EN-GJS-400 (GGG 40)
- Revêtement EWS selon GSK, RAL-GZ 662, épaisseur de couche min. 250 µm

Attention

- Observer la longueur de vis

	DN	PN (bar)	B (mm)	Poids (kg)	N° CAN 411	N° CAN 412	BIM / CAD
8000040000	40	16	23	1.800	271115	271117	
8000050000	50	16	21	2.600	271116	271118	
8000065000	65	16	26	4.100	271117	271119	
8000080000	80	16	21	3.900	271118	271121	
8000100000	100	16	21	4.900	271119	271122	
8000125000	125	16	21	5.900	271141	271123	
8000150000	150	16	21	8.000	271142	271124	
8000200000	200	10	23	15.400	271123	271135	
8000201000	200	16	23	11.600	271143	271145	
8000250000	250	10	25	18.400	271124	271136	
8000251000	250	16	25	17.600	271144	271146	
8000300000	300	10	30	30.400	271125	271137	
8000301000	300	16	30	24.000	271145	271147	
8000350000	350	10	30	47.700	271126		
8000351000	350	16	30	34.400	271146		
8000400000	400	10	30	44.800	271127	271138	
8000401000	400	16	30	42.000	271147	271148	