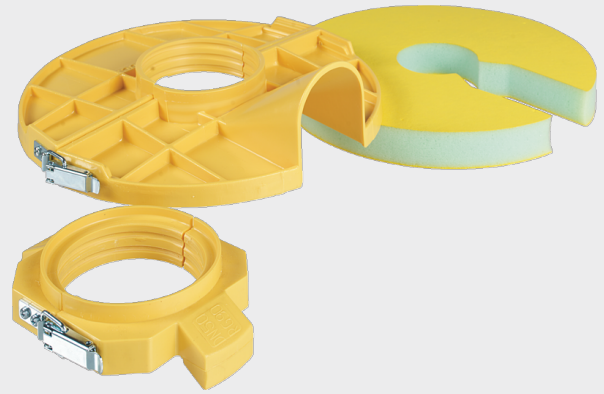


## Grouting device tool kit

6877



### Application

- Grouting device tool for wall duct
- Multiple uses
- The Hawle wall duct programme for gas covers all the standard installation models available on the market.
- Wet installation
- Mauerdurchführungen werden direkt in das Mauerwerk verbaut oder werden nachträglich in die Aussparung mit Ausgusswerkzeug vergossen.
- Dry installation
- With the use of compression sealing rings, wall ducts can also be dry-installed into the core boreholes.
- Connection options
- The various connection options (IG, flange) as well as the type of implementation (straight, angled, flexible) make it possible to rationally adapt installations to the respective situation.
- Applicable up to 5 bar operating pressure with temperatures from -20°C to +60°C
- Pressure levels standard

### Material

- Plastic

	ø PE	ø D2 (mm)	ø Plate	weight (kg)
6877V25001	32	60	280	1.000
6877V32140	40/50	75	280	1.000
6877V50002	63	90	280	1.000