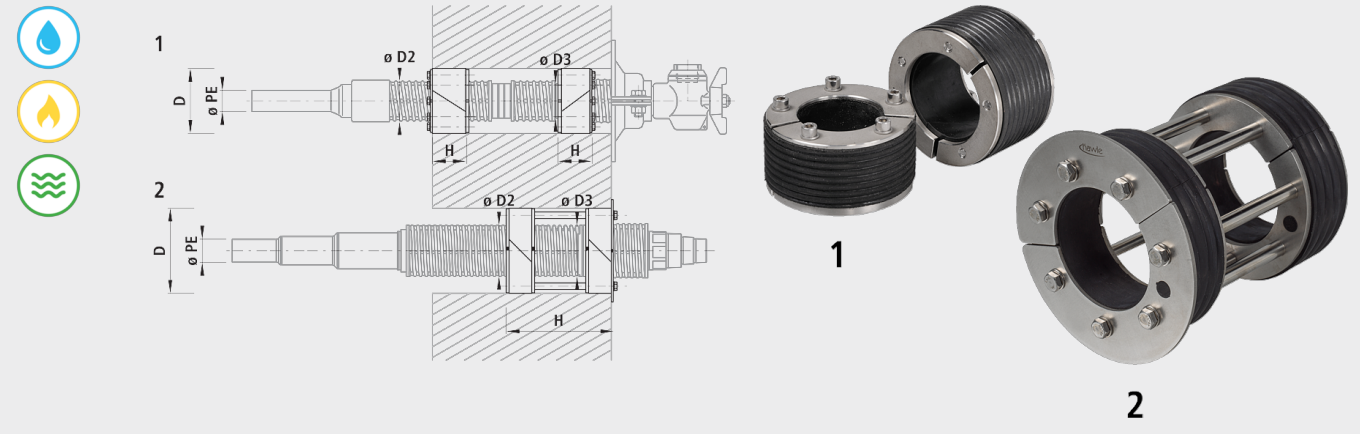


Compression sealing ring inside/outside for dry installation

6872



Application

- Can be mounted directly in the drill hole or protection pipe

Characteristics

- Two part sealing ring
- Pressure water tightness up to 1 bar

Material

- INOX
- NBR-Rubber

Installation and assembly

- Position the sealing ring on the wall entry and mount them together.
- Copper wire 8 mm dia. feed-through for earthing type 2 available

Anmerkung

- Scope of delivery: Type 1 consisting of 2 press rings. Available single part on request.
- Type 2 double press ring with pull-out protection.

	ø PE	Type	D (mm)	ø D2 (mm)	ø D3 (mm)	H (mm)	ø KB T (mm)	weight (kg)	NPK No. 412
6872V25032	32/40	1	100	60	53	50/40	100	1.500	714212
6872V40000	50	1	130	75	75	50	130	3.200	714213
6872V50010	63	1	130	90	90	50	130	2.500	714214
6872260160	32/40	2	150	60	53	160	150		714312
6872260240	32/40	2	150	60	53	240	150		714312
6872267160	40	2	150	67	67	160	150		714312
6872267240	40	2	150	67	67	240	150		714312
6872275160	50	2	150	75	75	160	150		714313
6872275240	50	2	150	75	75	240	150		714313
6872285160	50	2	150	85	85	160	150		714313
6872285240	50	2	150	85	85	240	150		714313
6872290160	63	2	150	90	90	160	150		714314
6872290240	63	2	150	90	90	240	150		714314