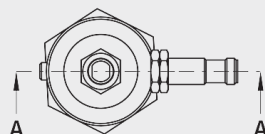
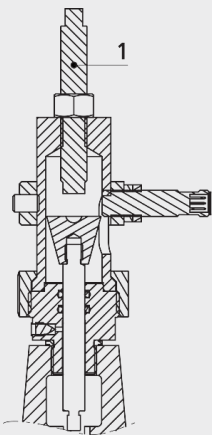


Analog position indicator 0 till 10 V

1961



Application

- The analogue position indicator is mounted on the central outlet of the valve cover. It is used for the electric signalling of an analogue valve position (0 to 100%).

Material

- INOX

	DN	weight (kg)
1961000001	1 1/2"-50	1.100
1961000002	65-100	1.100
1961000003	125-200	1.350
1961000004	250	1.710
1961000005	300	1.710